



Cat. No. 80042

IntelliPrep TRIO 240

Sample Preparation System



FFPE



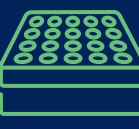
Liquid Biopsy



Extraction

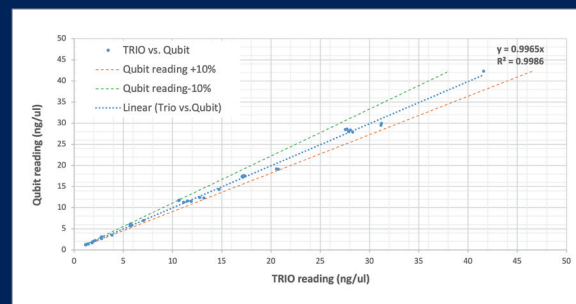
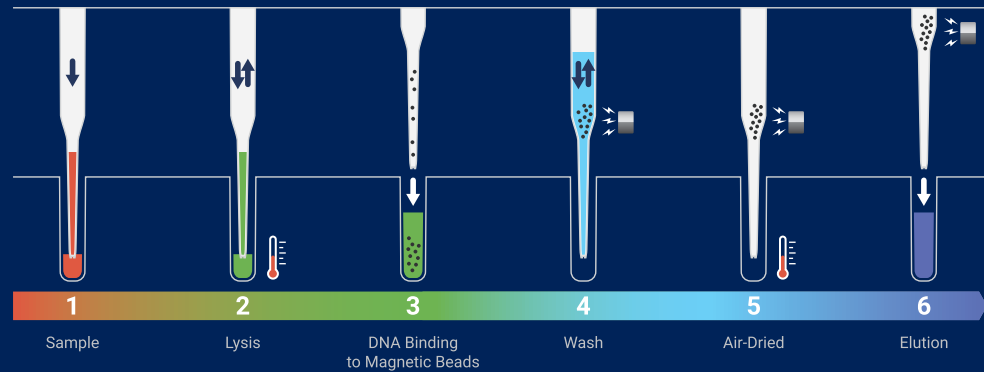


Quantification

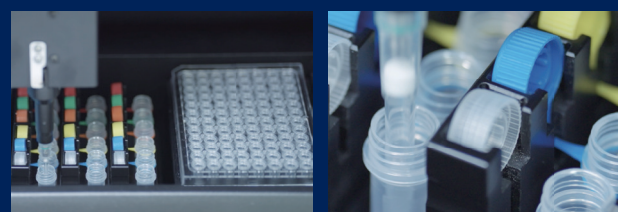


PCR Plate Setup

No additional sample pretreatment




Based on Qubit Fluorometric Quantification



The PCR setup performs necessary dilutions based on the quantified results of extracted nucleic acids from each sample deliver desired quantity of nucleic acid at pre-determined volume for the PCR reaction.

Formalin-fixed, paraffin-embedded (FFPE) Samples

Automated FFPE deparaffinization


Cat. No.83015	IntelliPrep FFPE DNA Extraction Kit	
	Sample Type	FFPE
	Sample Input Volume	10 µm section
	Yield	Varies by sample section
	Elution Volume	60 µL
	Total Processing Time	Extraction: 120 min Quantification: 35 min PCR Plate Setup: 10 min
	Reactions (rxn)	48 rxn

Sample	TRIO		Q-brand	
	Yield (ng)	A260/A280	Yield (ng)	A260/A280
1	1300	1.85	1325	1.89
2	2060	1.83	500	1.91
3	924	1.88	795	1.98
4	1180	1.95	1230	1.95

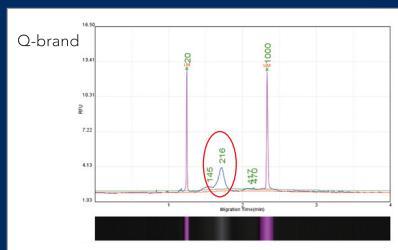
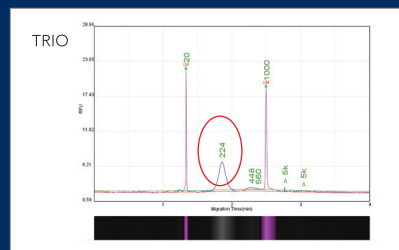
The extracted DNA yield and quality of one 10 µm FFPE sample derived from lung cancer patients using TRIO FFPE DNA Extraction Kit and Q-brand manual extraction kit.

Liquid Biopsy Samples

Supports large volume of plasma sample extraction

Cat. No.83013	IntelliPrep cfDNA Extraction Kit (≤5mL)	
Cat. No.83028	IntelliPrep cfDNA Extraction Kit (≤10mL)	
	Sample Type	Plasma
	Sample Input Volume	Up to 10 mL plasma
	Yield	~8 ng/mL from healthy human plasma
	Elution Volume	60 µL
	Total Processing Time	Extraction: 150 min Quantification: 35 min PCR Plate Setup: 10 min
	Reactions (rxn)	48 rxn for 5 mL plasma input 24 rxn for 10 mL plasma input

	Average Yield (ng)	CV%
TRIO 240	40.5	9% (n=6)
Q-brand	35.68	24% (n=4)



Cell-free DNA was purified from 4 ml plasma using IntelliPrep cfDNA Extraction Kit and Q-brand manual kit. The fragment size (200~240bp) of extracted cell-free DNA from 4 mL plasma samples were both examined by capillary electrophoresis.



Model: TRIO240
Throughput: up to 24 samples
Dimensions (WDH): 66 x 83 x 75.9 cm
Weight: 110 kg



IntelliPrep Extraction Kit

Ordering Information		
Products	Cat. No.	
IntelliPrep TRIO 240 Sample Preparation System	80042	
IntelliPrep Extraction Kits	IntelliPrep Viral DNA/RNA Extraction Kit	83012
	IntelliPrep cfDNA Extraction Kit (≤5mL)	83013
	IntelliPrep cfDNA Extraction Kit (≤10mL)	83028
	IntelliPrep FFPE DNA Extraction Kit	83015
	IntelliPrep FFPE DNA Plus Extraction Kit	83029
	IntelliPrep FFPE RNA Extraction Kit	83016
	IntelliPrep Blood Genomic DNA Extraction Kit	83026
	IntelliPrep Blood total RNA Extraction Kit	83027



Website



LinkedIn

CONTACT US

+886-2-2627-5878 marketing@plexbio.com www.plexbio.com



STATEMENT For Research Use Only. Not for diagnostic procedures.